

# The Market Report

## Stratford Forthcoming Events

### Tuesday 2nd May

Prime, Cull & Store Sheep - 10.30am

Fur, Produce & Misc - 10.00am

### Thursday 4th May

Online Timed Auction Starts - 12 noon

*See main advert for further information*

### Tuesday 9th May

Prime, Cull & Store Sheep - 10.30am

Fur, Produce & Misc - 10.00am

Online Timed Auction Finishes from 12 noon

### Friday 12th May

Farm Dispersal Sale - Nr Hitchin

*See main advert for further information*

*For further information regarding any of the sales  
please contact the Market Team*

Agricultural & Development Consultants, Chartered Surveyors, Auctioneers & Estate Agents

Oakleigh House, Thrapston,  
Northamptonshire NN14 4LJ

Alastair Brown: 07885 804450  
Jake Wagstaff: 07487 526803

CPH: 29/242/8000 NN14 4JU  
CPH: 43/266/8000 CV37 8LP

## REPORT FOR TUESDAY 25TH APRIL

### Prime Hogs

Trade steadied in the week following the end of Ramadan. SQQ 276.74p/kg. Best meat and shape hogs continued at a best end trade with W Bartlett & Son flying to 381p/kg with Beltex hogs at 43kgs. A Berks topped the day overall with 58kg Texels selling to 255p/kg or £147.90.

**Highlights** - J Underhill saw a best finished showing of Cheviot Texels forward with 42.5kgs selling to 308p/kg, their heavies at 48.5kgs reaching 284p/kg and 53kgs to 265p/kg; MJ Gillet & Partners topped their Charollais to 283p/kg for 46.5kgs; N Farmer topped the Suffolks with 49kgs selling to 277p/kg.

To		From		Average	
<i>Standards (32.1-39kg)</i>					
321p	£115.56	250p	£87.50	276.9p	£98.75
<i>Mediums (39.1 - 45.5kg)</i>					
381p	£163.83	257p	£109.23	276.7p	£121.23
<i>Heavies (45.6 - 52kg)</i>					
284p	£137.74	259p	£127.18	270.2p	£132.43
<i>Over 52kg</i>					
265p	£147.90	237p	£127.98	245.5p	£134.44

### Store Lambs

A two tier trade on the week with framed lambs selling well, longer term lambs looked hard sold. N Farmer topped the day with Suffolk lambs selling to £68; M Warmington saw equal comparable highs with Blue Texels to £65, alongside W Bartlett & Son with their Texels at the same price. Native bred long term lambs struggled to sell to £28.

To	From	Average
£68.00	£28.00	£43.38

### Culls Ewes & Rams

Best ewes still draw top prices with weight in demand, averaging £87.87. S Beale topped the day with tremendous Suffolk ewes reaching £172 over several lots; BS & FL Pile topped the Texels with best shape ewes to £164; Hadley Farms Ltd saw comparable highs with meat Continental crosses reaching £141; W Bartlett & Son topped with their Texels to £126.50; JE Lea & Son topped the Mules for the day with ewes reaching £115. Meat ewes sold regularly at £90 plus with the leanest types around £55-£65.

To	From	Average
£172.00	£28.00	£87.87

## Goats

Saw a fantastic trade with R Peach entering 2 year old Pygmy billies selling to £71.

Something a little new this month, with a Special Spring Sale of Garden Plants and Machinery. A cautious entry met a large crowd and a good trade in all sections.

## Plants, Shrubs & Trees

A lot more on offer than usual. A long planted trough sold to £71, the Fruit Trees sold to £24 from £10, Roses sold to £6, Delphiniums sold to £5, Foxgloves to £4, Rock plants to £3.80, Pinks sold to £3.50, Lupins to £3, Lavender to £2.50, Cucumber plants to £1.20, Tomato plants to 80p, Forget-me-nots to £1.20. Lots more on offer, it would be worth a trip for some quality plants to brighten up your garden at very competitive prices.

## Produce

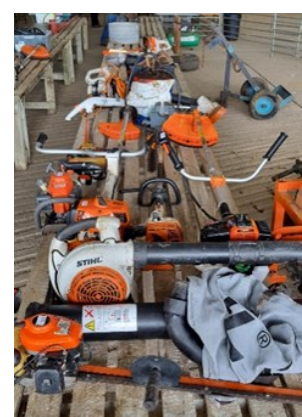
Sticks of Rhubarb sold to £2, Leeks to £1.30, Bags of Peanuts to £3, Chicken treats to £6, Bags of Mixed Corn sold to £12 and Layers Pellets to £12.

## Hatching Eggs

Trays of Duck eggs sold to £7, Trays of Hen eggs sold to £4.50, a dozen Quail eggs sold to £3.50, Goose eggs sold to £1.50 each and a dozen Yokohama eggs sold to £1.20.

## Sundries

A great range of garden equipment this week saw prices to £270 for a Saw Bench, a long reach Hedge Cutter to £120, Lawn Mowers to £60, Push Bikes to £58, a Fox Weathervane to £20, Bench Vice to £16, Plastic Water Trough to £14, Garden Gates to £10, Cattle Water Bowls to £10, Acro Props to £4. Over 150 lots forward with something of interest to everyone, even a Kitchen Sink! Come down next week for a look yourself.



Our chaplain Rev. Richard Wilde, Methodist Minister, member of the Agricultural Chaplains Association and the Farming Community Network will be in attendance at the market on Tuesdays for a chat, if you would like to talk.

[richardwilde.FCN@gmail.com](mailto:richardwilde.FCN@gmail.com)

## **Stratford Market Report 2023 Advertising Tariff**

### **Advertising Charges**

1/8 Page	£10 Per Week
1/4 Page	£20 Per Week
1/2 Page	£30 Per Week
Full Page	£50 Per Week
	+ VAT

### **Discounted Rates Available**

For further information, or to place and advert, please contact  
Beth Kitchener on 01832 732241 or [beth.kitchener@bletsoes.co.uk](mailto:beth.kitchener@bletsoes.co.uk)

# FCN

THE FARMING  
COMMUNITY  
NETWORK

listening / supporting / connecting

We are here for *you*

**Helpline:**

**03000 111 999**

**e-Helpline:**

**help@fcn.org.uk**

**Helpline** is open 7am to 11pm every day of the year





# EVERYTHING FOR THE FARM & COUNTRYSIDE

AT **STRAIGHTFORWARD** LOW PRICES

Agriculture • Construction • Country Living



*Visit us in store or get in touch...*

## TFM BANBURY

Grove Farm Buildings, Banbury Road, Burton Dassett CV47 2BB

T: 01295 235043 | E: [banbury@tfmsuperstore.co.uk](mailto:banbury@tfmsuperstore.co.uk)

[www.tfmsuperstore.co.uk](http://www.tfmsuperstore.co.uk)

# Bletsoes

— EST. 1881 —

## ONLINE TIMED AUCTION

### Tractors, Vehicles, Garden Machinery Equipment, Mowers, Farm Machinery & Effects

Starts: Thursday 4<sup>th</sup> May at 12 noon

Finishes: Tuesday 9<sup>th</sup> May from 12 noon



#### Briefly to Include:

2014 **IVECO** EEV 75E16 16' Beaver Tail Lorry with Ramps, **JOHN DEERE** 855 Tractor, 2 x **MASSEY FERGUSON** 35 3 Cylinder Diesel 2WD Tractors, **ZETOR** 4712 2WD Tractor, **FORD** LGT 14D Diesel Tractor, 2009 **JOHN DEERE** 997 ZTRAK 60" Cut Zero Turn Mower, 2006 **JOHN DEERE** X748 Ultimate 4x4 Tractor Mower, **KUBOTA** G2160 Ride-On Tractor Mower, **IFOR WILLIAMS** Trailers. Various Farm Machinery, Garden Mowers, Strimmer's, Hedge Cutters & Equipment

on behalf of **Greenland (Midlands) Ltd**  
**Desford, Leicestershire**

**Contact Alastair Brown 07885 804450**

Agricultural & Development  
Consultants, Chartered Surveyors,  
Auctioneers & Estate Agents

[www.bletsoes.co.uk](http://www.bletsoes.co.uk)

01832 736757



# Bletsoes

— EST. 1881 —

## Friday 12<sup>th</sup> May, 11.00am

at Elmdene Farm, Bedford Road, Holwell,  
Nr Hitchin, Hertfordshire SG5 3RS

## A Genuine Farm Dispersal Sale



### To Include:

2019 **JCB** 526-56 Agri Plus Loadall with Pallet Tines, 2009 **McCormick** CX110 T3 Xtrashift 4WD Tractor, 2004 **McCormick** CX85 4WD Tractor, 1997 **NEW HOLLAND** 8340 4WD Tractor, 2008 **MITSHUBISHI** L200 DI-D 4Work Pick-Up Truck, 2020 **ATCO** GTL 43HR Twin Ride On Lawn Mower, 2019 **WARWICK** WB12HD Dump Trailer, 2007 **AS MARSTON** 24' Flat Twin Axle Bale Trailer, 24' Flat Bale Trailer with Wooden Floor, 10T **REED & UPTON** Twin Axle Dump Trailer with Auto Door, 3 Grain Bins

Also Farm Machinery. Grain Augers, Various Gates,  
along with various Workshop Tools & Miscellaneous Effects

**on behalf of The Late B F Walker**

**Contact Alastair Brown 07885 804450**

Catalogue available online or by request

# Bletsoes

EST. 1881

## Your Future Is Our Business



Rural  
Property  
Sales &  
Purchases



Renewable  
Energy &  
Compulsory  
Purchase



Business  
Succession  
Planning



Promotion &  
Sale of  
Development  
Land



Livestock &  
Machinery  
Sales

Our experienced team is here to help you.

Agricultural & Development Consultants,  
Chartered Surveyors, Auctioneers & Estate Agents

01789 722677  
[bletsoes.co.uk](http://bletsoes.co.uk)