

The Market Report

Professional Ponderings – August 2024

I think that many will agree that the past week or so of sun has been welcome and from driving around Buckinghamshire and Northamptonshire it appears that many people have made a start with combining and the Oilseed Rape appears to be complete, Barley is well under way and the Winter Wheat is ripening well with the extra sun. A lot of people will be questioning Oilseed Rape in their rotation this coming season and although it is a good break crop, the low yields and the high-risk establishment to avoid the flea beetle and pigeons, mean it is not a crop that you want to be worrying whether it will break even or not and relying on the one in approximately three-year bumper crop.

Livestock prices seem settled with fat lambs consistently around 300 pence per kilo assisting many farmers with their cash flow. However, it seems strange that the price of wheat is low with feed wheat at £175 per tonne considering the reduced area of wheat drilled with the expected lower yields following the poor growing conditions through winter and spring. Does this mean yields are better than expected?

My first month at Bletsoes has flown by and I have been busy undertaking a variety of work from tenancy matters to planning applications for agricultural buildings plus attending the two machinery auctions, both of which were a success with strong prices achieved. Since moving back south and living on the family farm near Silverstone, any free evenings and weekends have been busy as there is always

Agricultural & Development Consultants, Chartered Surveyors, Auctioneers & Estate Agents

Oakleigh House, Thrapston,
Northamptonshire NN14 4LJ

Alastair Brown: 07885 804450
Jake Wagstaff: 07487 526803

CPH: 29/242/8000 NN14 4JU
CPH: 43/266/8000 CV37 8LP

something to do, especially coming into harvest alongside some late summer haymaking.

Once again, the Rural Payments Agency (RPA) have changed their mind on the Sustainable Farming Incentive (SFI). The proposed option to upgrade and add options into an existing SFI agreement on the anniversary date has now been removed. This does not stop you adding to the area of rotational options within a current SFI agreement, but it is important to remember that you must plant at least 50% of the rotational area within the agreement, each year. If you were planning to add to your SFI agreement this is now only possible by creating a new agreement to run alongside any existing agreements. If possible, from a management point of view it would be easier to have the agreement commencing in the same month as before however, the start date is in the hands of the RPA, so there is no guarantee.

On a positive SFI note the RPA have released an expanded offer of 102 new options to add to the 2023 SFI options and Countryside Stewardship options under one umbrella and split into the following categories:

- actions for agroforestry
- actions for boundary features
- actions for buffer strips
- actions for farmland wildlife on arable and horticultural land
- actions for farmland wildlife and habitats on grassland
- actions for heritage
- actions for integrated pest management
- actions for moorland
- actions for nutrient management
- actions for organic farming
- actions for precision farming
- actions for species recovery and management
- actions for soil health
- actions for waterbodies

As I mentioned earlier many people will be questioning Oilseed Rape as a break crop, and now is a good time to look through the various SFI options and ponder what may fit into the rotation, while you are sat on the combine, before drilling or early cultivations commence. Combining will also remind you of all the awkward shaped fields and triangle corners, and these can also be entered into an SFI option such as CAHL3 Grassy field corners or blocks. The payment rate may not seem that high for the option, however, add in the time saved turning around and

shunting into these areas and the inevitably lower yields and the SFI options are probably not so bad. If you do wish to investigate the SFI options and how they can fit into a rotation, a member of the Agricultural Team will be happy to help.

The Countryside Stewardship Capital Grants will continue as they were alongside the Farm Technology Fund but the advice is to make the most of these grants while they are still available, especially with the new Chancellor Rachel Reeves reportedly looking to plug the DEFRA £20 billion black hole.

In other news for the first time since March 2020 the Bank of England base rate has dropped albeit only one quarter of a percent to 5%, this will still make a difference to Base Rate loans and mortgages which will be welcomed by many and help with cash flow of many businesses. It will also make purchasing land subject to borrowing more appealing which is good news, as Bletsoes have just brought approximately 39.21 acres of arable and permanent pasture land to the market off Walgrave Road, Old. With the following properties currently on the market:

- 0.64 acres (0.26 hectares) of Paddock Land, located off Walgrave Road, Old, Northamptonshire
- 21.05 acres (8.52 hectares) of grassland available as a whole or in two lots located off Nags Head Lane, Hargrave, Northamptonshire.
- 5.90 acres (2.39 hectares) of permanent pasture land, located off Welford Road, Spratton, Northamptonshire.
- With other instructions on the way.

Wishing farmers a successful harvest and dry weather for hay making.

George Pullin
Graduate Rural Surveyor



LAND TO LET

CASTOR, PETERBOROUGH

Approx. 5 acres of Permanent Pasture at Castor, Peterborough available on a short term Farm Business Tenancy agreement or Grazing Licence.
For more information, please contact Verity Garlick at verity.garlick@bletsoes.co.uk



Thrapston Forthcoming Events

Wednesday 7th August

Field Sale of Store & Ewe Lambs
At Stratford Livestock Market

Thursday 8th August

Prime & Cull Sheep

Saturday 10th August

Store & Breeding Cattle, Sheep & Pigs

Thursday 15th August

Prime & Cull Sheep

Saturday 17th August

Thrapston Sale of Breeding Sheep & Rams
Store & Breeding Cattle, Sheep & Pigs

*For further information on any of the sales
please contact a member of the Market Team*

NOTICE

Please be respectful of the neighbours to Thrapston Market and park responsibly.

KEYSOE RC HORSE SHOW

Monday 26th August 2024

Forty Foot Farm, Chapel Lane, Souldrop, Beds. MK44 1HB
WhatThreeWords: broke. Lamps.thumb

Open to all - for further information please
use the link below.

[Keysoe Riding Club Horse Show - The UK's
Biggest Show Directory \(myridinglife.com\)](https://myridinglife.com)

KEYSOE

RIDING CLUB

REPORT FOR THURSDAY 1ST AUGUST

416 Prime Lambs

Trade took another jump this week for quality with all meat in demand, store lambs are sold at a better trade on a Saturday. Lighter meat lambs saw premiums with the SQQ 310.05p/kg. WF Knight & Son topped pence per kilo with a tremendous show of Continental lambs, seeing a high of 345p/kg for 49kgs lambs with their 45.5kgs to £154 over two pens, with their heavier lambs at 51kgs to £175 and 49kgs to £169 and their heaviest at 54kgs to £181. KF Matthews topped the day with best end Texels at 60kgs to £190.50.

Highlights - DM Walsh topped the lighter lambs of the day with a extreme Beltex at 39kgs selling to £133; John Gowling & Son topped their run of smart Continentals seeing the best shape at 45kgs sell to £152.50; CJ White penned the usual goods with smart Texel Mule lambs to £168 for 50kgs.

To		From		Average	
<i>Standards (32.1-39kg)</i>					
341p	£133.00	292p	£109.50	309.3p	£116.71
<i>Mediums (39.1 - 45.5kg)</i>					
339p	£154.00	287p	£114.00	310.1p	£132.58
<i>Heavies (45.6 - 52kg)</i>					
345p	£175.00	269p	£135.00	319.8p	£154.59
<i>Over 52kg</i>					
335p	£190.50	295p	£157.00	317.4p	£173.41

Cull Ewes & Rams

Unmatched trade with a serious showing of lean meat ewes averaging £127.59. RA Ford topped the day with best meat Suffolk ewes to £180; JI & JA Claypole saw Cheviot cross ewes to £177 for lean meat; AH Knight & Son saw the trade of the day with a fantastic run of long lean meat Continental cross ewes selling to £171, £170 and £160; M Holben saw comparable highs with smart shape lean meat Texel and Charollais crosses selling to £168, £166, £157, £143 and £141. All meat was seen at £130 plus with feeding types still between £85 and £110 breed dependent.

To	From	Average
£180.00	£53.50	£127.59

NOTICE

To ensure your entries are listed in the Saturday Store Sale Catalogue, please book in your stock by 4pm on Friday.

NFU SURVEY

NFU are currently conducting a **survey about tail docking and castration in lambs** to help inform discussions with the government on potential new restrictions.

We kindly ask that you complete the survey, and share the survey with your customers, to gather vital information on the impact of any proposed restrictions to the current practises of tail docking and castration within both farming businesses and the lamb market.

Please see full details and the survey link below.

Tail docking and castration in lambs is considered necessary to manage negative health and welfare impacts caused by fly-strike, or to avoid unwanted pregnancies and complications during post-slaughter processing.

Both procedures are permitted in the UK and governed by legislation however, the [Farm Animal Welfare Council's report](#) released in December 2022 discussed the implications of castration and tail docking (which are in the legal terms described as mutilation procedures) on the welfare of lambs and makes several recommendations related to these routine management procedures.

As a result of this report and due to growing pressure on the veterinary profession and resource, there is potential for regulatory changes to be taken forward by the new government.

The NFU is therefore seeking sheep producers' participation in a short survey on the lamb production and husbandry and management methods. (Open to both members and non-members)

This will provide us with a comprehensive understanding of practices within the sector and the necessary information and data to highlight the detrimental impact of introducing restrictions on these routine management procedures.

[Survey link: NFU members – take our survey on lamb castration and tail docking – NFUonline](#)

The deadline for the survey is **26 September 2024**

Please note. Question 3 – If you are NOT a NFU member please put the answer as N/A

NOTICE

If you would like your stock to be included in the weekly report presale, please contact the office before 12 noon on Monday.

Bletsoes

— EST. 1881 —

Breeding Sheep & Ram Sales 2024

Dates for your Diary

Wednesday 7th August at Stratford Market

Field Sale of Store & Ewe Lambs

Saturday 17th August at Thrapston Market

Breeding Sheep & Rams

Wednesday 11th September at Stratford Market

Breeding Sheep & Rams

Saturday 14th September at Thrapston Market

Breeding Sheep & Rams

Further details coming soon

Entry forms can be found online.

REPORT FOR SATURDAY 3RD AUGUST

Store & Breeding Cattle

Prices reached £1660 for 27 month Devon steers for Charles Hopperton with two others at £1640; three Limousin heifers from RD Holland sold to £1160; M Ikin sold a Hereford heifer for £670 and a British Blue heifer at £655; GH Rome & Sons sold Belted Galloway steers to £650 from £590.

Calves

British Blue bulls sold to £330 from £315, British Blue heifers sold to £300 twice and Aberdeen Angus heifers sold to £230 from £220, all entered by JEG James.

Pigs

Pietrain x pigs from PA Woodward sold to £80 from £65 to average £72.14; R Daubney sold Saddleback boars to £48 from £40; and three little Black pigs from Home Grown Care Farm sold to £22. Sows this week sold to £102, £68 from £35 for SL Fletcher.

222 Store & Breeding Sheep

Store Lambs - another stand on trade this week, although the average was slightly lower, reflecting the goods forward. All-in average £99.18. VJ Speak topped the day with a smart run of Texels to £140 for ewe lambs with their wethers at £136; A Manning penned a smart run of Charollais lambs seeing the biggest to £134.50, with their equivalent ram lambs to £125; TP Hinch penned their usual goods with smart bred Texels of mid frames to £128 and £108. All framed lambs were over £100 with long term lambs at £80 to £95.

Feeding Ewes - a national shortage has forced the trade in all sections averaging £75.92. A Pittom topped to £136 for part meat Texel crosses with leaner sorts at £109, £99.50 and £75; R Walvin saw the trade of the day with true feeding sorts to £90 and Welsh ewes to £40.

Breeding Sheep - I Birden topped the rams with purebred Dutch Spotted 2-shear rams to £240; E Beklevic saw their grade 4 Dutch Spotted double theaves with twins at foot selling to £140 and £130 a life.

HAY, STRAW & FODDER

80 x Large Square 4 String Bales of Good Quality Hay – Baled last week
Currently on Pallets or Trailers Undercover, Assist & Loading Facilities.
Located East Langton, Leics. Contact Jim 07973 367456

Equine

Shetland ponies sold to £1000, Jenny Donkeys sold to £940, a Shetland mare and foal sold to £800, an in-foal mare sold to £700 and Mules sold to £290.

Smallholders Sale

Poultry - Another busy Smallholders sale with 993 lots going under the hammer, which drew a huge crowd to this monthly sale with something for everyone.

Top price on the day, two Rhea chicks selling at £180 each, a trio of Seabrights sold to £80, four Goslings sold to £70, a Brahma hen with chicks sold to £50, a Muscovy and ducklings sold to £38, three Gold Silkie hens and a cock sold to £35, Guinea fowl sold to £25.

Sundries – Five feed barriers sold to £92, five and four sheep hurdles sold to £85, an ark and run sold to £52, milk churn to £48, feed bin £45, triple ladder £38, dog cages to £32, gates to £25, PTO Shafts £25.

LAND AVAILABLE

Approximately 3.78 acres of grazing land available to rent in Old Weston.

Fencing required to make stock proof.

Please contact Verity Garlick at verity.garlick@bletsoes.co.uk for further details.

UK FARM ASSURANCE REVIEW - YOUR THOUGHTS NEEDED

As you may be aware, the National Farming Unions and AHDB have commissioned an **independent review of farm assurance in the UK**.

The independent commission have now opened up a survey, inviting feedback from across the agricultural industry.

Evidence collated from the survey will assist in the development of the recommendations made in the final report regarding the future of assurance in the UK, due in autumn 2024.

We would strongly encourage you to take the opportunity to feedback your thoughts in this survey, to inform the future of assurance in the UK.

The survey should take between 10-15 minutes to complete.

Survey link: <https://app.onlinesurveys.jisc.ac.uk/s/promaraf-2021/the-uk-farm-assurance-review>

More information regarding the review and survey can be found here: <https://ahdb.org.uk/farm-assurance-review-latest-updates/survey2024>

SATURDAY 10TH AUGUST

STORE & BREEDING CATTLE

S A C Holgate

31 Store Cattle

15-25 Months

C E Hancock & Son

15 Store Cattle

17-27 Months

CALVES

F H Pullin & Sons

5 Black & White Bull Calves

3-4 Weeks

STORE & BREEDING SHEEP

P T Harris & Son

40 Store Lambs

NOTICE

Please ensure Entry Forms and all relevant paperwork accompany your entries when bringing livestock into the Market.

Entry Forms can be found on our Website, in the Market Office or alternatively please contact the Main Office.

LAND FOR SALE

LAND OFF WELFORD ROAD, SPRATTON, NORTHAMPTONSHIRE

Approximately 5.90 acres (2.39 hectares) of Permanent Pasture off Welford Road, Spratton, Northamptonshire.

For Sale as a Whole.

Offers are invited in excess of £170,000

For more information please contact

Alex Abrahams on 01832 732241



Our chaplain Rev. Eddie Smith, Church of England Minister, member of the Agricultural Chaplains Association and the Farming Community Network will be in attendance at the market on the 1st & 3rd Saturday each month for a chat, if you would like to talk.

eddie.smith@talk21.com

**FREE HEALTH ADVICE FOR FARMERS
TO CONTINUE AT THRAPSTON MARKET**

Parish Nursing Ministries UK will be offering health screening, information, and advice to farming families at Saturday markets. Their nurses will be based in the Bletsoes mobile unit, next to the market office.

The nurses will next be in attendance on Saturday 24th August 8.30am – 12.30pm. There is no need to book, just turn up and wait to be seen.

This free support can include • Blood pressure readings • Health discussions and advice on issues including joint/back pain and pain management, medication explanations, weight management, baby health issues, prostate concerns, restless leg syndrome, arthritis • Wellbeing discussions and advice on subjects including stress management, bereavement and dementia

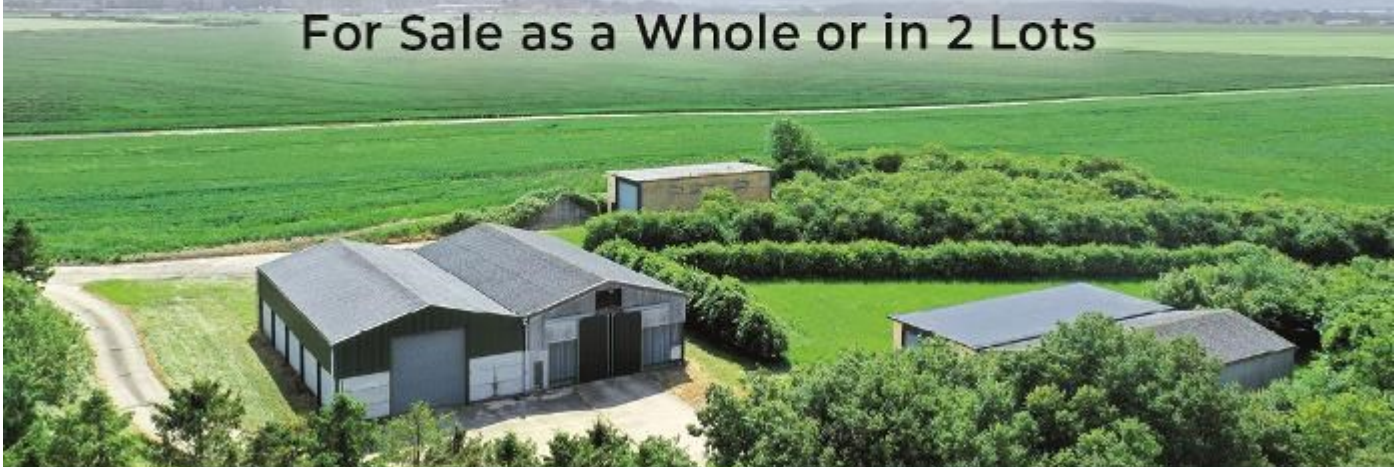
For further information contact Andrea 07866 803798 Andrea@fcn.org.uk

Bletsoes
— EST. 1881 —

**Land at Upwood Airfield
Huntingdonshire**

**In all about 164.48 acres (66.56 hectares)
Commercial holding with strategic development potential**

For Sale as a Whole or in 2 Lots



nicola.c-b@bletsoes.co.uk

01832 732241

bletsoes.co.uk

Preventing Water Pollution & Avoiding Cattle Watering Breaches

The Environment Agency have highlighted a number of breaches where farmers have not taken reasonable precautions to prevent agricultural diffuse pollution occurring in relation to cattle watering.

Livestock access to watercourse can cause various issues, including:

- Banks to collapse which increases flood risk
- Build-up of sediment causing pollution and damaging habitats
- Siltation and affecting how channels work
- Animal wastes in water posing a risk to human and animal health

Measures can be taken to prevent these issues:

- Fence off surface water to prevent livestock damaging the banks and fouling in the water. This will also allow natural habitats to develop which will provide protection from soil erosion
- Previously managed or constructed drinking points in watercourse are no longer recommended as they can cause poaching in one area. Alternative watering facilities should be installed.
- Position livestock feeders and drinkers away from water courses and move at frequent intervals to avoid poaching.
- Plant hedges alongside watercourse to prevent access and enhance biodiversity.

Funding through Countryside Stewardship Capital Grants is available for capital items such as fencing. Please contact a member of the Agricultural Team for further information.



Supplying Energy Saving Solutions to Farmers in the Midlands

Solar PV & Battery Systems
Air & Ground Source Heat Pumps
Energy Efficient Lighting & Other Electrical Works

Contact Us

sales@pipinghot.uk

01327 307134

www.pipinghot.uk



**PIPING HOT
RENEWABLES**

Registered Office Address: 23 Cottesbrooke Park, Heartlands Business Park, Daventry, NN11 8YL

Thrapston Market Report 2024 Advertising Tariff

Advertising Charges

1/8 Page	£10 Per Week
1/4 Page	£20 Per Week
1/2 Page	£30 Per Week
Full Page	£50 Per Week
	+ VAT

Discounted Rates Available

For further information, or to place and advert,
please contact Beth Kitchener on 01832 732241 or beth.kitchener@bletsoes.co.uk

Bletsoes do not endorse any of the products or services advertised in the market reports

Secretary/PA (FULL TIME)

An exciting opportunity within our Oakleigh House office. The successful candidate will provide full PA and secretarial administrative support to the Agricultural team.

The ideal candidate will:

- Have excellent typing skills, including audio typing.
- Have comprehensive experience with Word, Excel, Outlook and ideally also Publisher and Access.
- Be a good communicator, oral and written.
- Effectively organise and prioritise their workload.
- Work well as part of a team, in an enthusiastic and positive manner.
- Be conscientious with excellent attention to detail.

We offer a competitive salary and benefits; a friendly work environment within a reputable, well established, professional, family business.

Job Description available upon request.

To apply, send your CV and covering letter to:

Mrs N J Clayton-Bailey BSc (Hons), MRICS, FAAV
Henry H Bletsoe & Son LLP
Oakleigh House, 28 High Street
Thrapston
Northamptonshire NN14 4LJ

Email: nicola.c-b@bletsoes.co.uk
Closing Date: Monday 12th August 2024

Bletsoes

— EST. 1881 —

COLLECTIVE MACHINERY & EQUIPMENT SALE

Thrapston Auction Centre
Haldens Parkway
NN14 4QT

Friday 30th August at 10.30am

For Entry Forms please visit our website
Or Contact the Main Office on 01832 732241

Important, entries must be returned by
Tuesday 20th August to be included in the catalogue

Auctioneer in Charge: Alastair Brown 07885 804450

Bletsoes

— EST. 1881 —

An Auction



Saturday 31st August at 1.00pm

At Thrapston Livestock Market

Entries by Monday 19th August

NO entries will be accepted after this date

For further information contact Beth Kitchener

Agricultural & Development
Consultants, Chartered Surveyors,
Auctioneers & Estate Agents

www.bletsoes.co.uk

01832 736757

Bletsoes

— EST. 1881 —

Eastern Region

HAMPSHIRE DOWN CLUB SHOW & SALE

At Stratford Livestock Market

Clifford Chambers, Stratford-upon-Avon, Warwickshire. CV37 8LP

Wednesday 11th September at 1pm

Judging at 11am

To include MV & Non MV Sections

Entry Forms are available by request or online

Entries to be made by Grassroots & Entry Form

Entries Close Friday 23rd August

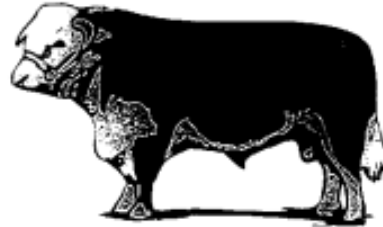
No late entries will be accepted

For further information contact Alastair Brown – 07885 804450

Beth Kitchener – market@bletsoes.co.uk

Kevin or Jane Byford – jka.byford@btconnect.com

BEDFORD LIVESTOCK SHOW SOCIETY



Michaelmas Show Saturday 21st September 2024 at Thrapston Market

**Please come along and support our Show
Entries invited for Breeding & Store Animals
Cattle, Sheep, Pig, Goat and Poultry Sections**

Dinner & Dance Friday 22nd November 2024 at Bedford Blues Rugby Club 6.00pm for 7.30pm

**Presentation to Winners
Cups, Trophies and Prize Money**

For Entries & Dinner Tickets please contact:

**Bletsoes: 01832 732241 / Mark Blakemore: 07802 291171
Charles Tomkins: 07801 420747 / William Saunders: 07711 089677**

www.bletsoes.co.uk



THRAPSTON AND DISTRICT FAT STOCK SHOW SOCIETY

Saturday 30th November 2024
Thrapston Livestock Market

The Fat Stock Show is an important date in the calendar at **Thrapston Livestock Market**. It is a day when everyone is welcome from competitors, to Young Farmer stock judges to spectators. It is an opportunity for all generations in the rural community to get together.

It may seem a long way off, but when it comes to the Fat Stock Show, planning is already in full swing!

This year we are going big, with our **Prize Money** for the Champion Beast increasing to a whopping **£1000** with the Reserve Champion receiving **£500**! Our Champion Sheep haven't been forgotten and this **Prize Pot** is also increasing in 2024. Exhibiting livestock at the Show isn't just for those who have done it for years. Why not enter animals this year and you could win one of the many monetary prizes on offer for cattle, sheep, pigs and non-livestock classes. You could enter as an individual, as a pair, as a group or even as a Club, enabling you to share the responsibilities, support each other or even have a little bit of healthy competition between friends.



The Society is always looking for new committee members with new ideas and suggestions.

If you would like to get involved with the Show including advice about livestock you could enter, please do get in contact.



Secretary: Beth Kitchener



07736 143630



beth.kitchener@bletsoes.co.uk

Chairman: Hugh Brightwell

Bletsoes

— EST. 1881 —

Land at Walgrave Road, Old, Northamptonshire

In all about 39.21 acres (15.87 hectares)

For Sale as a Whole

- Attractive ring-fenced parcel of land
- 25.10 acres (10.16 ha) of arable
- 14.11 acres (5.71 ha) of permanent pasture
- Viewings by appointment

