

The Market Report

July 2023

Professional Ponderings

Agricultural Team Update

The Agricultural Team are currently busy with a number of tasks including, land sales, FBT tenders and Countryside Stewardship applications. The deadline for Mid-Tier Countryside Stewardship applications is 18th August 2023, so if you are looking to enter into a new Countryside Stewardship Agreement, please do get in touch with a member of the Agricultural Team as soon as possible.

It is worth noting that, if your existing Countryside Stewardship agreement ends as at 31st December 2023, you will not be offered an agreement extension (“Mirror Agreement”) as has been done in previous years. You will need to make a new application, even where you do not wish to make changes to your agreement. We are informed by DEFRA that 2023 is the last year to apply for Countryside Stewardship in its current form, and from 2024 “Countryside Stewardship Plus” will be launched. The finer detail on this scheme is not yet confirmed, however the rhetoric has very much been focused on local nature recovery, and providing additional environmental benefits than are already generated by the farm ecosystem.

No doubt you have all read in the Farming Press that DEFRA have made some much-anticipated announcements on the next phase of Sustainable Farming

Agricultural & Development Consultants, Chartered Surveyors, Auctioneers & Estate Agents

Oakleigh House, Thrapston,
Northamptonshire NN14 4LJ

Alastair Brown: 07885 804450
Jake Wagstaff: 07487 526803

CPH: 29/242/8000 NN14 4JU
CPH: 43/266/8000 CV37 8LP

Incentive (SFI). We are told that applications for this will not open until August, although a full detailed manual is now available. SFI agreements will commence throughout the year on a monthly basis, which could help businesses with much needed cashflow. SFI can be used on its own, or alongside existing Countryside Stewardship Agreements for grassland, mixed and arable systems. If you would like to discuss the specifics of the new 3-year agreements under SFI, please speak to Grace Millbank or Rob Russell on 01832 732241.

Finally, a reminder that the Annual Health and Welfare Review of Livestock Scheme remains open for applications. This scheme is part of the SFI and so long as you are eligible for Basic Payment Scheme in 2023, and have the required number of livestock, you can apply for a funded vet visit to review matters such as lameness, use of wormers and testing for BVD in cattle. The minimum livestock numbers are:

- 11 cattle (dairy or beef)
- 21 sheep
- 51 pigs

Annual Health and Welfare Review of Livestock applications are done via a simplified online system, and if you wish to discuss this further, please do get in touch with a member of either the Agricultural or Auctions Team.

As combines will no doubt start to roll out in the coming weeks, I'm sure all of these matters will get pushed to the back of your mind, so if you are considering either a Countryside Stewardship or Sustainable Farming Incentive application, please do contact the Agricultural Team as soon as possible.

Finally, as you may have seen, the Agricultural Team have recently launched for sale two farms, namely Rectory Farm, Tibberton, Worcestershire, and Oakhurst Farm, Eye, Cambridgeshire. Over the coming weeks, we shall be launching a number of other agricultural properties, from paddocks to blocks of commercial arable land. If you're looking to purchase land, please register your search requirements with us. Alternatively, if you're looking to sell, please do contact the Agricultural Team for a discreet confidential discussion, as we do have a register of people looking to buy.

Wishing you all a safe and successful harvest.

Grace Millbank
Agricultural - Rural Chartered Surveyor



Thrapston Forthcoming Events

Wednesday 5th July

Dispersal Sale of Poultry - 5.30pm

See main advert for further information

Thursday 6th July

Prime & Cull Sheep

Saturday 8th July

Store & Breeding Cattle, Sheep & Pigs

Thursday 13th July

Prime & Cull Sheep

Friday 14th July

Farm Dispersal Sale - Loddington - 1pm

See main advert for further information

Saturday 15th July

Store & Breeding Cattle, Sheep & Pigs

Mid-Month Smallholders Sale

*For further information on any of the sales
please contact a member of the Market Team*

Thrapston Market Report 2023 Advertising Tariff

Advertising Charges

1/8 Page	£10 Per Week
1/4 Page	£20 Per Week
1/2 Page	£30 Per Week
Full Page	£50 Per Week
+ VAT	

Discounted Rates Available

For further information, or to place and advert,
please contact Beth Kitchener on 01832 732241 or beth.kitchener@bletsoes.co.uk

REPORT FOR THURSDAY 29TH JUNE

294 Prime Lambs

A different week with a festival affecting the trade. Prices held through the week with an SQQ of 274.44p/kg. Grange Farm topped the day with a terrific show of best end Texels at 44kgs selling to 284p/kg or £123.50, with equal finish Texel crosses at 43kgs selling to £122. F Southall & Son topped the day overall with best meat Suffolk lambs at 52kgs selling to £140.

Highlights - S Goodship saw best end trade for smart Charollais with 48kgs selling to £132; RF Davy saw a smart trade with Charollais Mules selling to £125 for 45kg meated lambs; WF Knight & Son penned their usual goods with smart Texels to £122 for 44kgs and 43kgs over several pens.

To		From		Average	
<i>Standards (32.1-39kg)</i>					
265p	£102.00	265p	£102.00	265p	£102.00
<i>Mediums (39.1 - 45.5kg)</i>					
284p	£125.00	261p	£105.00	274.7p	£117.28
<i>Heavies (45.6 - 52kg)</i>					
275p	£140.00	255p	£125.00	269.9p	£127.94

32 Cull Ewes & Rams

Prices remain similar, with a smaller showing forward. K Beck topped the day at £100 for Suffolks with feeding types to £55; RF Davy topped the Mules at £85; F & SM Stamper saw Texel hogs to £95 with two tooth to £76; PA Wilford saw meated Continental crosses at £90.

To	From	Average
£100.00	£47.00	£67.54

NOTICE

To ensure your entries are listed in the Saturday Store Sale Catalogue, please book in your stock by 4pm on Friday.

Our chaplain Rev. Eddie Smith, Church of England Minister, member of the Agricultural Chaplains Association and the Farming Community Network will be in attendance at the market on the 1st & 3rd Saturday each month for a chat, if you would like to talk.

eddie.smith@talk21.com

REPORT FOR FRIDAY 30TH JUNE

Sale Report for Thrapston Collective Machinery Report

Another busy sale with better weather and a good crowd of buyers. A bit of a change round in sale order, which seemed to work, and keep both vendors and buyers happy. More lots are required at the next sale, please ensure you book your items in for cataloguing and advertising purposes presale.

Top price gained

£10,200.00	Matbro 250 Telehandler	£190.00	Generator
£2,500.00	I.W T/A Trailer	£180.00	S/A Trailer
£2,400.00	Mini Digger	£175.00	Cement Mixer
£800.00	Bale Grab	£170.00	Industrial Brush
£800.00	Road Roller	£170.00	Topper
£600.00	Springtine Cultivator	£160.00	Boat
£600.00	Cardboard Crusher	£160.00	Cement Mixer
£550.00	T/A Trailer	£160.00	Hopper
£520.00	Flat Land Roll	£160.00	Hopper
£500.00	3 Wheel Trolley	£155.00	Gate
£500.00	Opico Grass Harrows	£150.00	Water Trough
£450.00	Trailer	£150.00	Power Hack Saw
£420.00	Mtd Ride On Lawnmower	£150.00	Press
£400.00	Cooks Wrapper	£150.00	Round Bale
£390.00	Haybob	£150.00	Water Trough
£360.00	Tyre Remover	£140.00	Qty Of Corrugated Tin Sheets
£340.00	Acrobat	£140.00	Ext Pallet Tines
£330.00	FE Bucket	£140.00	Straps
£320.00	Chain Harrows	£135.00	Row Crop Wheel & Tyres
£320.00	Topper	£120.00	Lister Engine With Clippers
£310.00	Bucket	£120.00	Rubber Mats
£300.00	Rotavator	£120.00	Wheel & Tyre
£280.00	Topper	£110.00	Ride-On-Mower
£280.00	Water Trough	£110.00	Galv Gate
£240.00	Fe Bucket	£110.00	Vicon Vari Spreader
£235.00	Wood Chipper	£110.00	Topper
£220.00	4 Tyres	£110.00	2 Tyres
£220.00	Hopper	£100.00	Rotavator
£200.00	Pike Trailer	£100.00	Bag Lift
£200.00	Waker Plate		

SATURDAY 8TH JULY

STORE & BREEDING CATTLE

R Martin

1 Angus Cow with Angus Heifer Calf
1 British Blue x Cow with Angus Heifer Calf

Doraville Farms Ltd - TB4

20 Charolais & Limousin Steers & Heifers 14-22 Months

C E Hancock & Son

21 Store Cattle 15-25 Months

BOVINE TB - EXTENSION OF POST-MOVEMENT TB TESTING TO ANNUAL SURVEILLANCE TESTING PARTS OF THE EDGE AREA OF ENGLAND

TB testing in annual surveillance testing parts of the Edge Area.

On 1 August 2023, post-movement TB testing will become compulsory for cattle moved to annual surveillance testing parts of the Edge Area from higher TB incidence areas of England and from Wales.

Cattle moved to herds in annual surveillance testing parts of the Edge Area from higher TB Incidence areas of England and from Wales, will require compulsory post-movements skin testing between 60 and 120 days after their arrival on the destination holding

Higher TB incidence areas are:

- Six-monthly surveillance testing parts of the Edge Area of England
- High Risk Area (HRA) of England
- Wales

Please ensure that you inform us of your area before they are sold in the ring.

NOTICE

Please ensure Entry Forms and all relevant paperwork accompany your entries when bringing livestock into the Market.

Entry Forms can be found on our Website, in the Market Office or alternatively please contact the Main Office.

REPORT FOR SATURDAY 1ST JULY

Store & Breeding Cattle

Two cows and calves from G Hartley Webb sold to £1910 from £1500 for two Hereford cows with Hereford calves at foot.

R Munns entered fourteen Aberdeen Angus steers which sold to £1530 from £1260 to average £1369; S Bailey sold a Fleckvieh steer to £620.

Calves

JEG James entered three British Blue calves which sold to £385 for a bull and £335 from £250 for Blue heifers; Evolution Farming entered twenty-five calves which sold to £115 for British Friesian bulls, Hereford bulls sold to £88 to average £60 all through.

Pigs

Pigs sold to £82 from £50 for Mrs T Bailey; WRJ Goss sold Kune Kune pigs to £11 and Westfield Farm sold pigs to £10.

Goats

Eighty-six goats forward today which sold to £128 for two Pygmy wethers from C Ward; M Lacy sold pedigree Boers to £95 for a Billy, £85 for a Nanny that had run with the Billy and Nannies with kids sold to £75 a life; A Pittom sold Nannies to £75 and weaned kids to £60 for does and £50 for wethers; M Cobb sold Boer doelings to £120, Nannies with kids to £75 per life and £70 for weaned doelings; SJ Porter sold Dairy bred x Nannies with kids at foot to £60 per life; SH & RS Whinney sold weaned kids to £42 from £25.

Llamas

A male and female Llama were entered, the 5 year old female believed to have run with a black & white male Llama sold to £620 and a gelded male sold to £400.

Store & Breeding Sheep

Store Lambs - saw a small entry of new season lambs with cades making up the majority, T Buck topped with Jacob ewe lambs to £58.

Feeding Ewes - a strong entry forward with an all in average of £101.45. RJ Lee topped with Texels to £142 for meat and size; M Lacey saw the trade of the day with fat Hampshire ewes at £132; Manor Farms saw a smart run of well meated Texels forward selling to £114 and £100. Leaner feeding types were still in the £80's.

Ewes & Lambs - grass keeps the confidence, with buyers out in force. T Buck topped to £150 a life for 6 tooth pedigree Texels with a ram lamb at foot; Heleben Settlement saw another turn up for the books, with big framed full mouth North Country Mule ewes with single lambs selling to £92.50 a life, with Texel crosses at £90.50 a life and £76.50 a life. Leaner, older types were all seen around £60 a life.

Smallholders Sale Report

Another very busy and successful sale this month. A huge crowd of bidders, buyers and onlookers gathered at Thrapston to see almost 1000 lots go under the hammer. Why not come and see for yourself it's a great FREE day out. **NEXT Sale Saturday 15th July.**

Sundries - Another bumper entry of well over 300 lots, with something for everyone. A massive crowd gathered to grab a bargain in someone's eyes, and in others a fantastic price. **SPECIAL NOTE:** We will be only accepting items that are appropriate with the Smallholder's Sale. It is **NOT** a household clearance sale, please do not be offended if we turn you away.

Hatching Eggs - Over 100 lots to choose from, all sorts of eggs forward selling to £9 for 12 Polish, £9 for 6 Copper Maran, 3 x Pea Fowl to £15, Guinea Fowl sold to £12, Turkey to £6, Muscovy to £9.

Produce - A few plants just turned up on the day, but this section was very successful for what was entered, Agapanthus plants sold to £8, Courgettes to £2, Beetroot to £1, Lilies to £7.

Rabbits - Over 200 to choose from, a fantastic selection of all types, breeds, colours, long and short haired, rare and common, young and old were on offer. Prices sold to £50 from £4 to average around £14 each.

Guinea Pigs - A vast array of breeds, long, short haired and colours selling to £25 for sows from £6 and boars sold to £20 from £1.

Ferrets - Fifteen forward which sold to £38 for a Hob and Jills to £28.

Farm Cats - A new section which took over very well with thirteen kittens selling to £100 from £2.50 to average £32.

NOTICE

If you would like your stock to be included in the weekly report presale, please contact the office before 12 noon on Monday.

FARM CRISIS NETWORK bTB RESEARCH & SURVEY

As part of this research FCN will be running a survey from June until mid-August:

<https://www.surveymonkey.co.uk/r/3HG5YFG>

This has been designed with input from colleagues and academics and is to be shared with livestock/cattle farmers in the UK. We want as many farmers as possible to fill it in so that we can gain a wealth of data from across the whole of the UK. It should take no more than 10 minutes to complete.

The results of the survey will help FCN to better understand how farmers and farm families perceive the threat of bTB, helping us to support those at risk or affected by a bTB breakdown.

A press release with more information has been written and was issued to media on Tuesday 13th June and is available here: <https://fcn.org.uk/blog/2023/06/05/study-seeks-uk-farmers-feedback-on-impacts-of-bovine-tuberculosis/>

FCN

THE FARMING
COMMUNITY
NETWORK

listening / supporting / connecting

We are here for *you*

Helpline:

03000 111 999

e-Helpline:

help@fcn.org.uk

Helpline is open 7am to 11pm every day of the year

HENRY SAUNDERS

AGRICULTURAL SERVICES

07748 140502 | 07786 311824



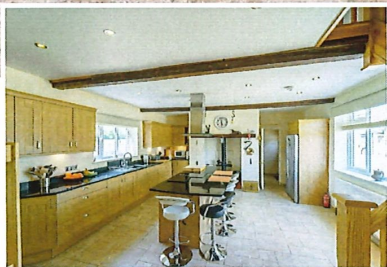
- Combining - 9m Lexion TerraTrac c/w Yield Maps
- Ploughing and all Cultivations
- 6m Horsh Joker ideal for Shallow Cultivation
- Direct / Min-till and Conventional Drilling
- Self Propelled Spraying c/w GPS
- Fertiliser Application c/w GPS and Section Control
- Silage and Hay Making - Complete Service Available
- Round and Square Balers (120cm*90cm) c/w Wrappers
- Straw and Hay Baling (Grass and Straw wanted)
- Hedge Cutting and Verge Mowing
- Flail Mowing and Heavy Duty Topping
- Muck Spreading / Carting / Yard Clearance / Muckspreader Hire
- Umbilical Slurry Application c/w 12m dribble bar and GPS

Land wanted to farm, agreements can be tailored to your requirements.

College Farm, Oakley, Bedford
saunders.agricul@btinternet.com

   @HSaundersAg

FOR RENT



Tathall End Hanslope

- Substantial 7 bed detached Farmhouse
- 3 receptions, kitchen/breakfast room, Utility
- Oil fired heating, Large Gardens
- Ample parking, Adjacent to a working Farm
- EPC rating: E Council Tax Band: G

Rent £2,995 pcm Deposit £3,455

Planning & Development Surveyor

Bletsoes is a busy independent firm of Chartered Surveyors and Auctioneers predominantly working with agricultural businesses and land-owning clients. We have a large client base in the Midlands, Home Counties and East Anglia, and we have a growing workload within our successful Planning and Development Team. The Planning and Development Team undertakes a broad range of work with direct involvement in some of the largest regional development schemes, including new settlements and urban extension. We regularly promote land directly for clients and have achieved a number of notable allocations in local plans. We act for clients in negotiations with developers/promoters and regularly conclude transactions with PLC House Builders, SME House Builders and Promoters. We are also heavily involved in rural planning with the re-development of farmyard sites, class Q applications and applications for rural worker dwellings.

We are looking for a qualified Chartered Surveyor to help grow and strengthen our Planning and Development Team. The role will include a range of development and planning work including the negotiation of option and promotion agreements, development land agency and planning work – including the promotion of land for development, planning applications and planning appeals. In addition, the role may also include some valuation work and involvement in renewable energy.

Candidates should be hardworking, capable, organised and keen to work within a busy team as well as on their own initiative. An understanding and interest in the development process is important along with the ability to provide our clients with broad advice on related matters.

Salary will be dependent upon experience and qualifications.

Please apply with a CV and covering letter to:

Peter Moore MSc MRICS FAAV,
Henry H Bletsoe & Son LLP, Oakleigh House,
28 High Street, Thrapston, Northamptonshire NN14 4LJ
Tel: 01832 732241 / 07872 809251 or peter.moore@bletsoes.co.uk

All applications will be treated in strictest confidence, and we would be happy to discuss the role in more detail before applications are submitted.

Bletsoes

— EST. 1881 —

Wednesday 5th July 5.30pm

at Thrapston Livestock Market

A Dispersal Sale of Poultry

- 1 Trio of **Dutch Bantams** 1 pen
- 1 **Dutch Bantam** Hen 1 pen
- 3 **Silver Seabright** Hens & 1 Cock 1 pen
- 4 **Gold Seabright** Hens & 1 Cock 1 pen
- 70 **Brown** Laying Hens 15 pens
- 3 **Ayam Cemani** Hens & 1 Cock 1 pen
- 2 Trios of **Welsummer Bantams** 2 pens
- 2 **Ayam Cemani** POL Hens 1 pen
- 2 **Black Rock** Hens 1 pen
- 4 **Easter Egger** Hens 2 pens
- 2 **Light Sussex** Hens Large Fowl 1 pen
- 2 Trios of **Ross Combs** 2 pens
- 2 Trios of Large Fowl **Naked Necks** 2 pens
- 3 **Light Sussex Bantam** Hens 2 pens
- 1 **Silver Sussex** Hen 1 pen
- 3 **Gold Top** Hens 2 pens
- 1 **Lakenvelder** Hen 1 pen
- 1 Pair of **Pekins** 1 pen
- 4 **Naked Neck Bantam** Hens 2 pens
- 2 **Aseel** Hens 2 pens
- 8 Mixed **Bantam** Hens 4 pens
- 1 **Blue Maran** Hen 1 pen
- 1 Pair of **Mandarin** Ducks 1 pen
- 1 Pair of **Tufted** Ducks 1 pen
- 20 **Mallard** Drakes 5 pens
- 1 **Blonde** Female **Mandarin** 1 pen
- 2 Pairs of **Call Ducks** 2 pens
- 1 **Call Duck** Drake 1 pen
- 1 **Nene** Gander 1 pen
- 50 **Pied & Purple** Guinea Fowl 15 pens
- 2 Trios of **Purple** Guinea Fowl 2 pens
- 35 **Lavender** Guinea Fowl 10 pens
- 1 Trio of **Silver Pheasants** 1 pen
- 1 Pair of **Grey Muscovy** Ducks 1 pen
- 1 **White Muscovy** Female 1 pen
- 3 **Black & White Pied Muscovy** Females 2 pens
- 6 Pairs of **Indian Blue Peafowl** 6 pens
- 1 Pair of **Turkeys** 1 lot
- 6 **Turkey** Hens 3 lots
- 17 x Orange Game Crates
- 30 x 20 Litre Drinkers
- 20 x 3 Litre Drinkers
- 10 x Galvanised Feeders
- 10 x Galvanised Chick Feeder Trays



on behalf S & G Fur & Feather Supplies

Agricultural & Development
Consultants, Chartered Surveyors,
Auctioneers & Estate Agents

www.bletsoes.co.uk

01832 736757

Bletsoes

— EST. 1881 —

Friday 14th July, 1.00pm

at Loddington Grange, Loddington, Kettering,
Northamptonshire. NN14 1JX

A Farm Sale



To Include:

2012 **CLAAS** Telehandler,
2010 **JOHN DEERE** 6930 Tractor, 2008 **JOHN DEERE** 6630 Tractor,
2001 **NEW HOLLAND** TM165 Tractor,

4 x Grain Trailers, Surplus Cultivation Equipment,
Farm Sundries & Effects.

Along with other inserted items from neighbouring farm businesses

on behalf of W H Tanner & Son

The sale is being held due to a reconstruction of the farming Business

Contact Alastair Brown 07885 804450

Catalogue available online or by request

Bletsoes

— EST. 1881 —

ONLINE TIMED AUCTION

Starts: Monday 17th July at 12 noon
Finishes: Friday 21st July from 12 noon



To Include:

Plough Parts, Ploughs, Wheels & Tyres, Implements,
Assorted Tractor Linkage, JOHN DEERE Tractor Spares,
PTO's, Engineering Equipment, Literature,
plus much more.

**on behalf of M V Weston
Peakirk, Peterborough**

Contact Alastair Brown 07885 804450

Further details available soon

Agricultural & Development
Consultants, Chartered Surveyors,
Auctioneers & Estate Agents

www.bletsoes.co.uk

01832 736757

COLLECTIVE MACHINERY & EQUIPMENT SALE

Haldens Parkway, Thrapston

Friday 28th July at 10.30am

For Entry Forms please visit our website
Or Contact the Main Office on 01832 732241

Important, entries must be returned by
Tuesday 18th July to be included in the catalogue

Auctioneer in Charge: Alastair Brown 07885 804450

Bletsoes

— EST. 1881 —

Unofficial Eastern Region Early Breeders'

SALE OF PEDIGREE SOUTHDOWNS

At Thrapston Market

Saturday 29th July at 1pm

Judging in Pens at Midday

To include MV & Non MV Sections

Entry Forms are available by request or online

All Entries **MUST** complete and return an Entry Form

Entries Close Sunday 16th July

For further information contact Alastair Brown – 07885 804450

www.bletsoes.co.uk

Bletsoes

— EST. 1881 —

Thrapston Breeding Sheep & Ram Sales

Entries are now being taken for the following sales

Saturday 19th August

Catalogue Entry Deadline – Wednesday 9th August

Wednesday 13th September

Catalogue Entry Deadline – Monday 4th September

Saturday 14th October

Catalogue Entry Deadline – Wednesday 4th October

Please contact us with your entries,
for cataloguing & advertising purposes.

Entry forms can be found online.

www.bletsoes.co.uk

Bletsoes

— EST. 1881 —

Rectory Farm Tibberton, Worcestershire

In all about 192 acres (77 hectares)
For sale as a whole

- Attractive ring-fenced farm
- 152 acres (61 ha) of arable land
- 38 acres (15 ha) of permanent pasture
- Agricultural barn with potential for alternative uses, subject to planning



nicola.c-b@bletsoes.co.uk

bletsoes.co.uk

01789 722677

Bletsoes

EST. 1881



Oakhurst Farm Eye, Cambridgeshire

In all about 115 acres (46 hectares)
For sale as a whole or in up to 5 lots

- 5 Bedroom Farmhouse and 4 Bedroom Barn Conversion
- Consent to convert farm buildings to create 3 dwellings
- 105.65 acres of Arable Land
- Environmental and Redevelopment Opportunities



nicola.c-b@bletsoes.co.uk

bletsoes.co.uk

01832 732241