

# The Market Report

## Stratford Forthcoming Events

### Tuesday 21st March

Prime, Cull & Store Sheep - 10.30am

Fur, Produce & Misc - 10.00am

### Tuesday 28th March

Prime, Cull & Store Sheep - 10.30am

Fur, Produce & Misc - 10.00am

### Tuesday 4th April

Prime, Cull & Store Sheep - 10.30am

Fur, Produce & Misc - 10.00am

### Saturday 8th April

Hay, Straw & Fodder Sale

*At Thrapston Livestock Market*

*For further information regarding any of the sales  
please contact the Market Team*

Agricultural & Development Consultants, Chartered Surveyors, Auctioneers & Estate Agents

Oakleigh House, Thrapston,  
Northamptonshire NN14 4LJ

Alastair Brown: 07885 804450  
Jake Wagstaff: 07487 526803

CPH: 29/242/8000 NN14 4JU  
CPH: 43/266/8000 CV37 8LP

## REPORT FOR TUESDAY 14TH MARCH

### 217 Prime Hogs

Trade firmer on the week, SQQ lifted to 228.04p/kg. Hadley Farms topped the day pence per kg with 38kgs Texels, with MH Edwards topping to the same mark at 234p/kg for 44kgs Beltex. WR Haines topped the day overall at £122.80 for 58kg Suffolks, with their Charollais at 46.5kgs selling to 233p/kg.

**Highlights** - K Welsby had a smart showing of Texel crosses to 232p for 45kgs; R & EM Prentice topped their Texel crosses to 230p/kg for 49.5kgs.

To		From		Average	
<i>Lights (25.5-32kg)</i>					
227p	£72.64	220p	£61.60	224.8p	£68.78
<i>Standards (32.1-39kg)</i>					
234p	£88.92	226p	£74.91	229p	£83.27
<i>Mediums (39.1 - 45.5kg)</i>					
234p	£105.11	226p	£95.34	228p	£101.22
<i>Heavies (45.6 - 52kg)</i>					
233p	£113.85	160p	£83.20	224.3p	£109.90
<i>Over 52kg</i>					
220p	£121.80	202p	£116.60	215.9p	£118.88

### 38 Cull Ewes & Rams

A more level showing this week with no exceptions, all in average saw £92.38. Prices ranged from £48 for smaller framed lean ewes to £136 for H Taylor and their Lleyn ewes; MJ & IJ Gibbs had a smart show of Charollais ewes topping to £121; TR Tame & Son topped the Suffolks for the day at £121; Hallow Court saw the best of the Mules with big framed meat ewes selling to £98. Size and meat remain in demand selling upwards of £80. Smaller types remain £70 and below.

To	From	Average
£136.00	£48.00	£92.38

### **WANTED**

GFW/Machinery operator required for mixed family farm in Warwickshire. Beef, sheep and arable. Modern machinery and a 3 bedroom house in the centre of a village can be provided to the right candidate.  
Please call Peter 07801 027245 for more information.

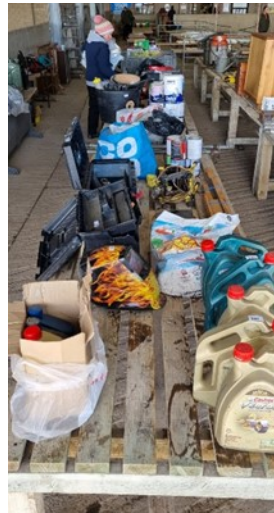
## Plants

Getting closer to spring and a few more plants on offer this week, along with various other garden ornaments, pots and lawn care effects. Pots sold to £23, plants from £1 to £8 for hanging baskets.



## Produce

On offer this week, Feed for Cattle, Sheep and Poultry ranging from £10-£14 per bag along with Niger seeds at £4 per bag and Brussel Sprouts at £1 per punnet. More will be on offer soon.



## Hatching Eggs

More eggs on our tables than the supermarkets have on their shelves!! A range of eggs from Duck eggs at £1 each, Goose eggs at £1, trays of Hen eggs selling to £4, Bantam eggs to £1.50, Legbar and Khaki Campbells to 80p per ½ dozen.

## Sundries

A good array of all sorts to pick from, motor oil to tools, furniture to gardening hand tools. Spool Valves sold to £40, Hay Rack to £24, Motor Oil £20, Bibles to £16, Painted Vintage Tractor plates to £15, Garden Fork £10 and much more, come and see for yourselves what bargains can be had in the difficult times.



It's an easy way to turn unwanted items into cash, there are plenty of sheds and garages out there full of unused items, prompt payment by direct bank transfer. Contact us with your items so that we can advertise to potential buyers before the sale or just bring them on Tuesday morning and book them in with our staff, it couldn't any easier. [Click here to download an Entry Form](#)



## FOR SALE

### Working Border Collie Puppies

Black & White Collie puppies from working parents – Dam can be seen  
Wormed, all vaccinations, micro-chipped.

Born 2nd November 2022 - ready to go to their new homes.

2 x dogs available.

Contact: Rose Smith 07951 286856  
Near Stow-on-Wold, Gloucestershire



Our chaplain Rev. Richard Wilde, Methodist Minister, member of the Agricultural Chaplains Association and the Farming Community Network will be in attendance at the market on Tuesdays for a chat, if you would like to talk.

[richardwilde.FCN@gmail.com](mailto:richardwilde.FCN@gmail.com)

### Stratford Market Report 2023 Advertising Tariff

#### Advertising Charges

1/8 Page	£10 Per Week
1/4 Page	£20 Per Week
1/2 Page	£30 Per Week
Full Page	£50 Per Week

+ VAT

#### Discounted Rates Available

For further information, or to place and advert, please contact  
Beth Kitchener on 01832 732241 or [beth.kitchener@bletsoes.co.uk](mailto:beth.kitchener@bletsoes.co.uk)

# FCN

THE FARMING  
COMMUNITY  
NETWORK

listening / supporting / connecting